

Not to Scale

- Park Boundaries
- Buck Creek
- - - Buck Creek Scenic Trail

The Buck Creek Corridor



National Trail Parks and Recreation District

Facilities Master Plan
Clark County, Ohio



Buck Creek Scenic Trail

Old Reid Segment

Site Amenities

- Cycling
- Skating
- Walking

Unique Characteristics/Observations

- An extension of the Little Miami Scenic Trail
- Extends 3.1 miles from North Limestone Street to Pumphouse Road along Buck Creek
- The trail connects with the Little Miami Scenic Trail at the corner of Jefferson Street and Center Street, sharing right-of-way along city streets to Buck Creek for 0.8 miles
- Shared use trail

Recommendations

- Extend bike lane north of bridge crossing Buck Creek through Old Reid Park
- Use abandoned road west of Lagoons for bike lane north to Croft Road
- Provide crossing at Croft Road
- Extend bike lane along the north side of Croft Road east to Robert Eastman Road
- Provide crossing at Robert Eastman Road
- Extend bike lane south of Robert Eastman Road below the dam east toward Buck Creek Lane and north to beach and into Buck Creek State Park



- Existing Trail
- Proposed Trail

Buck Creek Scenic Trail



National Trail Parks and Recreation District

Facilities Master Plan
Clark County, Ohio





① View west along Warder Street

Buck Creek Scenic Trail

Warder Street Segment

Site Amenities

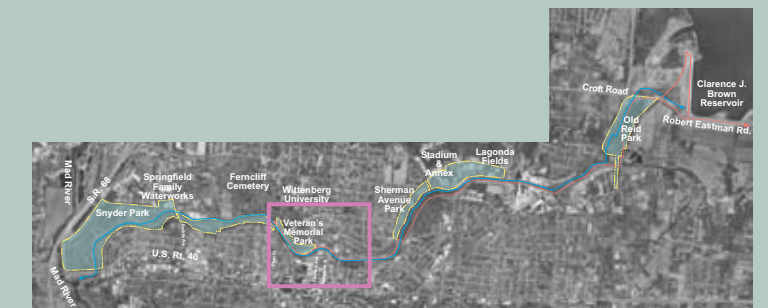
- Cycling
- Skating
- Walking

Unique Characteristics/Observations

- An extension of the Little Miami Scenic Trail
- Extends 3.1 miles from North Limestone Street to Pumphouse Road along Buck Creek
- The trail connects with the Little Miami Scenic Trail at the corner of Jefferson Street and Center Street, sharing right-of-way along city streets to Buck Creek for 0.8 miles
- Shared use trail

Recommendations

- Remove parallel parking spaces from the north side of Warder Street
- Relocate traffic lanes on Warder Street and move them northward
- Create a dedicated bike path along the south side of Warder Street along the Stone Wall
- Separate the bike path and eastbound Warder Street traffic with 12" raised barrier
- Create trail crossing at Fountain and Limestone
- Connect with existing trail west of Fountain and east of Limestone



- Existing Trail
- Proposed Trail

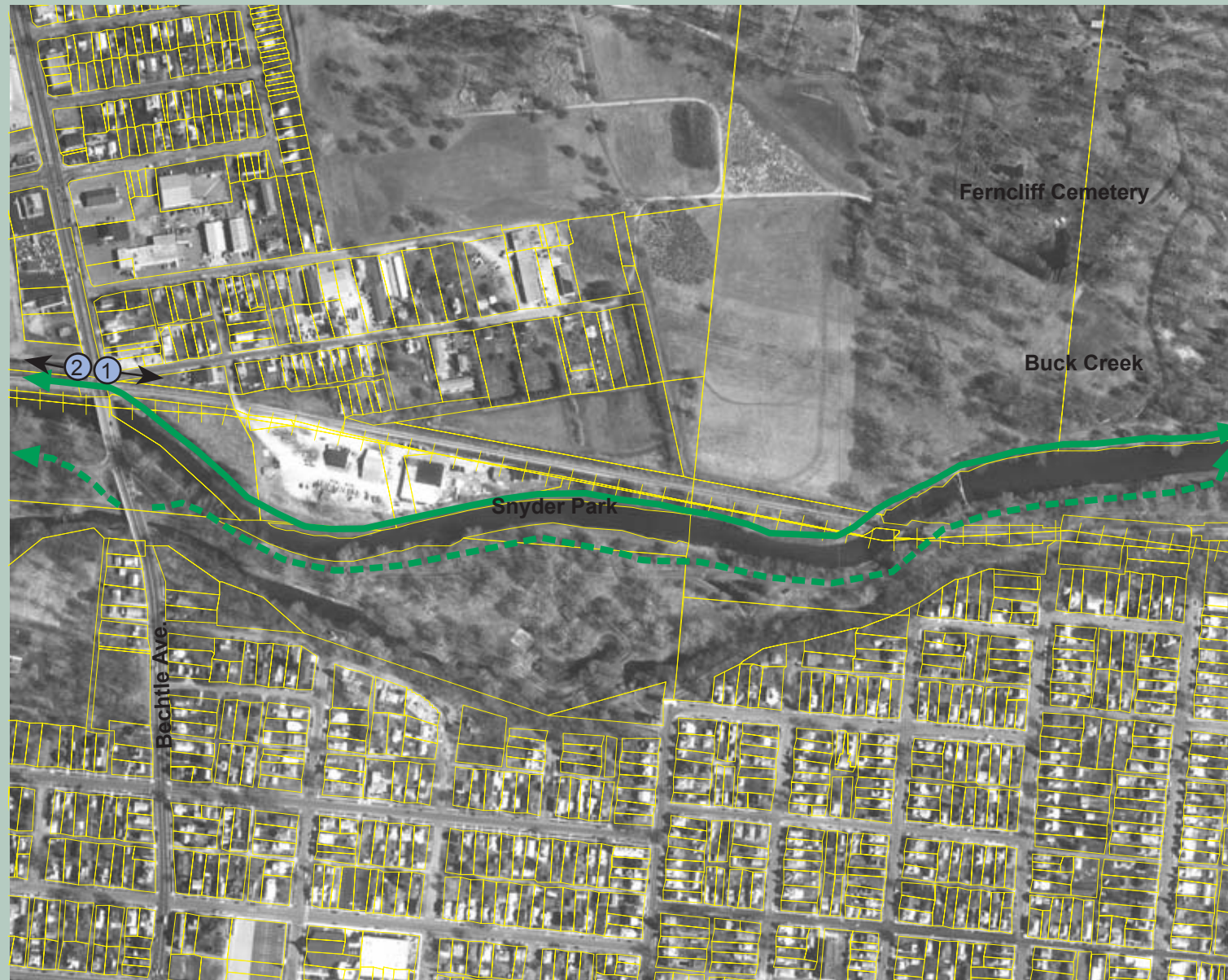
Buck Creek Scenic Trail



National Trail Parks and Recreation District

Facilities Master Plan
Clark County, Ohio





① View east from Bechtle Avenue along rail corridor



② View north on Bechtle Avenue

Buck Creek Scenic Trail

Bechtle Avenue to Plum Street Segment

Site Amenities

- Cycling
- Skating
- Walking

Unique Characteristics/Observations

- An extension of the Little Miami Scenic Trail
- Extends 3.1 miles from North Limestone Street to Pumphouse Road along Buck Creek
- The trail connects with the Little Miami Scenic Trail at the corner of Jefferson Street and Center Street, sharing right-of-way along city streets to Buck Creek for 0.8 miles
- Shared use trail

Recommendations

- Provide crossing at Plum Street from Cliff Park Drive west into Ferncliff Cemetery
- Extend trail along the north edge of Buck Creek
- Construct a bridge crossing Buck Creek into Snyder Park
- Continue trail into Snyder Park, under Bechtle Avenue, and through the remaining portion of Snyder Park along the south side of Buck Creek (See Snyder Park Concept)
- Strong consideration must be given to existing mature trees during detailed trail planning



- Alternate Trail (Multiple Railroad Crossing)
- Proposed Trail (Single Railroad Crossing)

Buck Creek Scenic Trail





Buck Creek Scenic Trail

Snyder Park Route 40 West Segment

Site Amenities

- Cycling
- Skating
- Walking

Unique Characteristics/Observations

- An extension of the Little Miami Scenic Trail
- Extends 3.1 miles from North Limestone Street to Pumphouse Road along Buck Creek
- The trail connects with the Little Miami Scenic Trail at the corner of Jefferson Street and Center Street, sharing right-of-way along city streets to Buck Creek for 0.8 miles
- Shared use trail

Recommendations

- Extend trail south through Snyder Park (See Snyder Park Concept) along Buck Creek
- Extend trail below US Route 40 at Buck Creek
- Extend trail along the south side of the Buck Creek around the Ohio Edison Factory and connect to rail (See Regional Trail System map)
- Strong consideration must be given to existing mature trees during detailed trail planning



- Alternate Trail
- Proposed Trail

Buck Creek Scenic Trail

