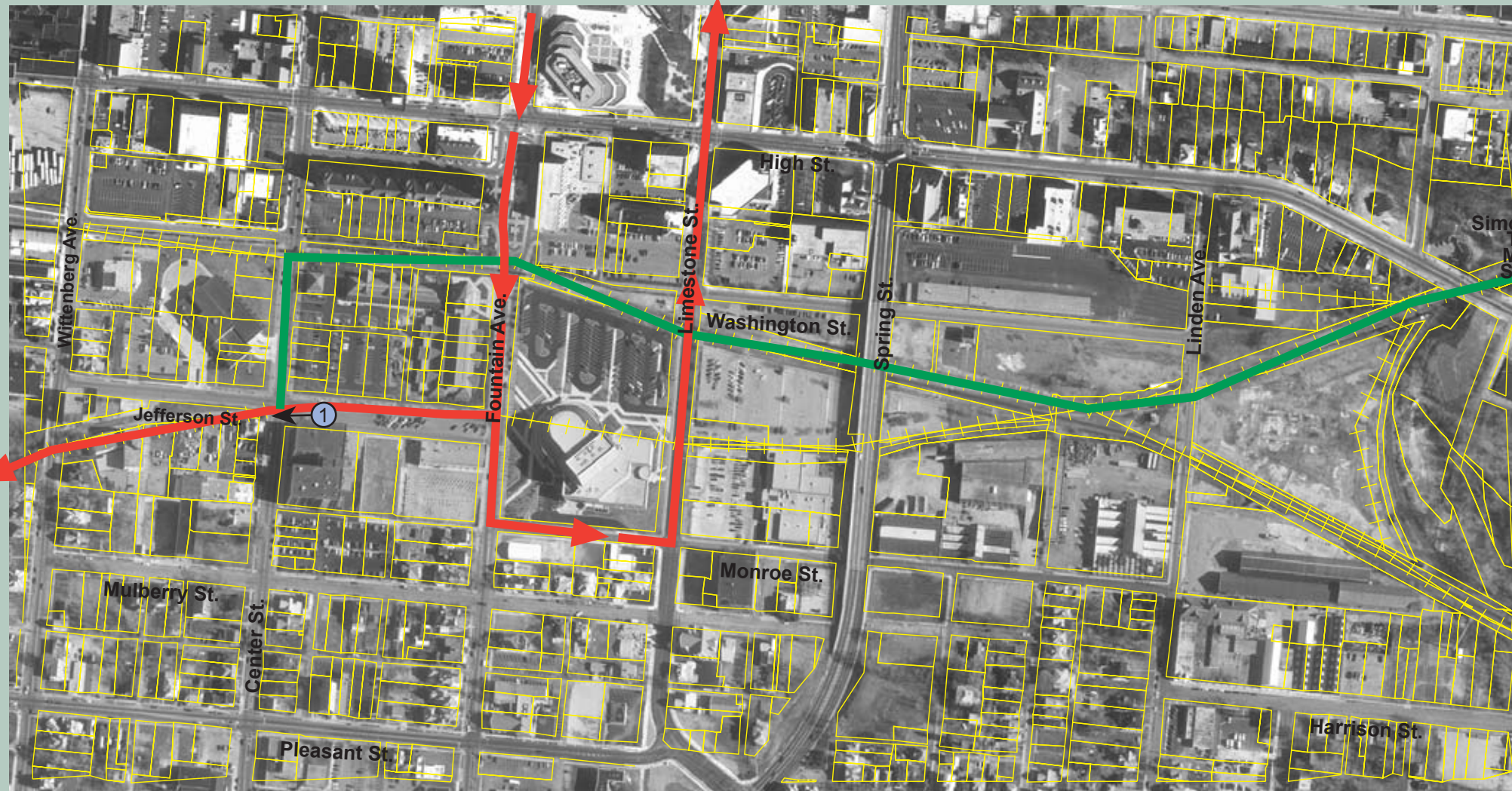


To Buck Creek To Buck Creek



Little Miami Scenic Trail

Jefferson Street to Washington Street Rail Corridor Segment

Site Amenities

- Cycling
- Skating
- Walking
- Horseback Riding

Unique Characteristics

- Extends 69 Miles Between Springfield (Clark County) and Milford (Clermont County)
- Shared Use Trail
- Uses the Abandoned Little Miami Railroad Line

Recommendations

- Begin the Simon Kenton trail at the intersection of Jefferson Street and Center Street
- Dedicate a separate curbed lane along the east vehicular traffic lanes of Center Street north to Washington Street
- Dedicate trail east from Washington Street along the north side of the rail corridor
- Continue the trail east crossing Limestone, Spring, and High Streets north to Mitchell Stadium
- Options for use/improvement of shared path along streets
- Trail must be physically separated from tracks, screened and buffered

To Beatty Station

Simon Kenton Trail to Mitchell Stadium



① View west along Jefferson Street at Trail Head

Existing Trail Route

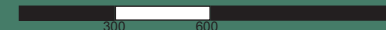
Proposed Trail

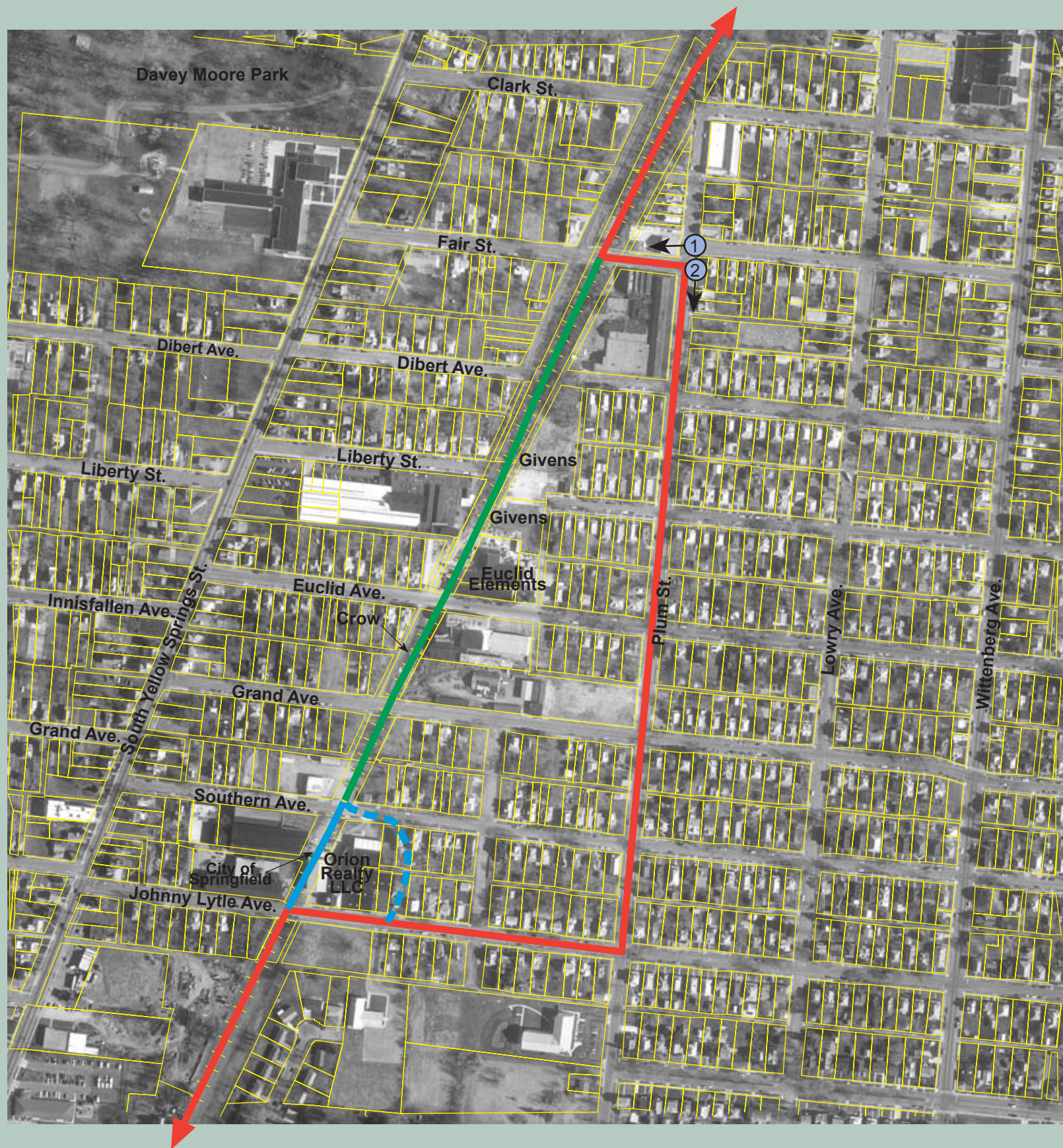
Little Miami Scenic Trail



National Trail Parks and Recreation District

Facilities Master Plan
Clark County, Ohio





① View west along Fair Street



② View south along Plum Street

Little Miami Scenic Trail

Fair Street to Johnny Lytle Avenue

Site Amenities

- Cycling
- Skating
- Walking
- Horseback Riding

Unique Characteristics

- Extends 69 Miles Between Springfield (Clark County) and Milford (Clermont County)
- Shared Use Trail
- Uses the Abandoned Little Miami Railroad Line

Recommendations

- Extend trail south of Fair Street on abandoned rail corridor to Liberty Street (Owner City of Springfield)
- Continue trail south of Liberty Street using the city owned easement west of the Givens and Euclid Elements Properties to Euclid Avenue
- Acquire access easement on abandoned rail corridor through the Crow Property to Grand Avenue
- Extend trail south of Grand Avenue on abandoned rail corridor to Southern Avenue (Owner City of Springfield)
- Verify ownership of abandoned rail corridor between Southern Avenue and Johnny Lytle Avenue (Appears to be owned by City of Springfield)
- Negotiate alternative trail connection with Orion Realty LLC between Southern Avenue and Johnny Lytle Avenue

- Existing Trail Route
- Proposed Trail
- Preferred Trail
- - - Alternative Trail

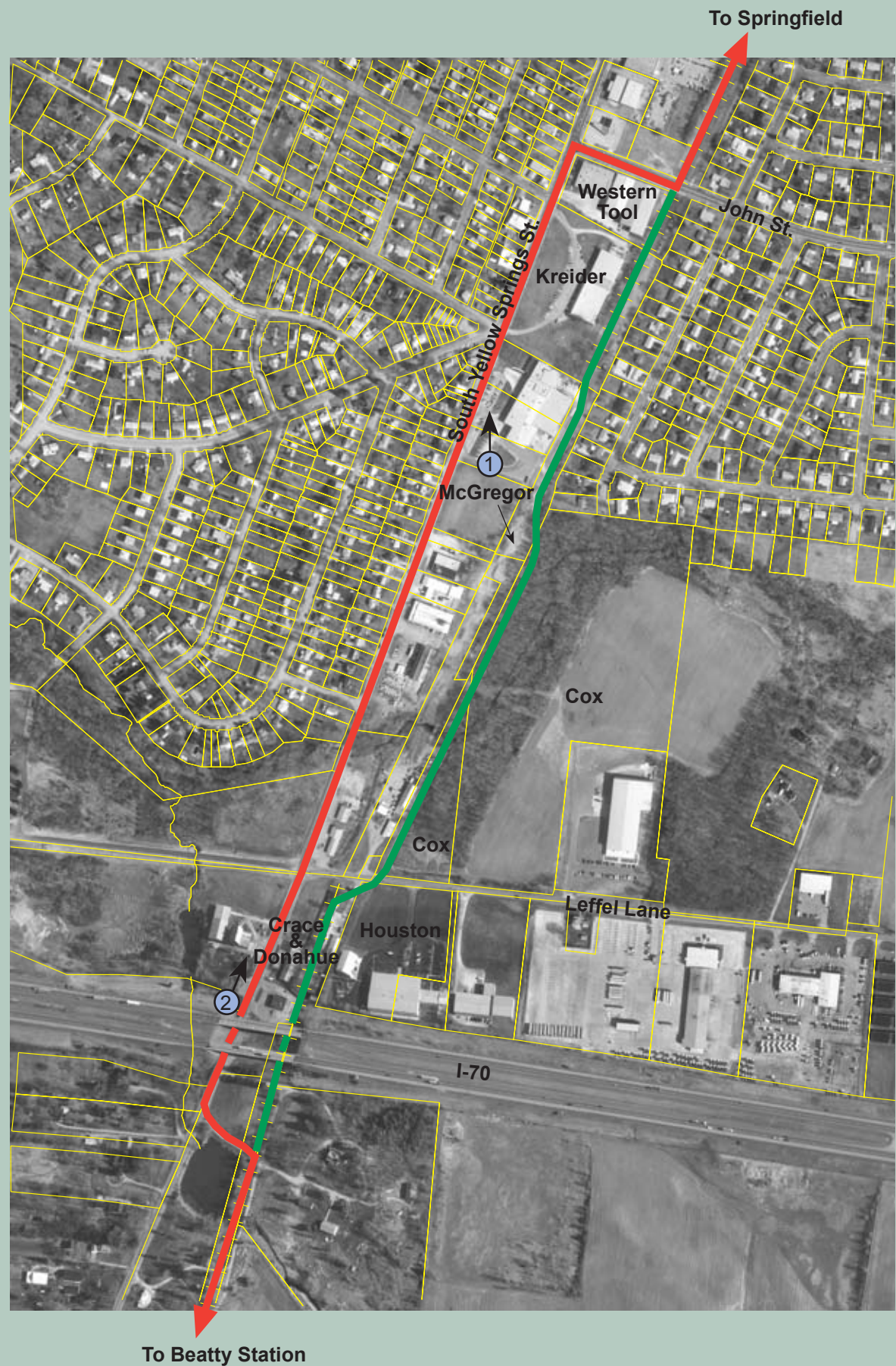
Little Miami Scenic Trail



National Trail Parks and Recreation District

Facilities Master Plan
Clark County, Ohio





① View north along South Yellow Springs Street



② View north along South Yellow Springs Street at I-70

Little Miami Scenic Trail

John St. to I-70

Site Amenities

- Cycling
- Skating
- Walking
- Horseback Riding

Unique Characteristics

- Extends 69 Miles Between Springfield (Clark County) and Milford (Clermont County)
- Shared Use Trail
- Uses the Abandoned Little Miami Railroad Line

Recommendations

- Acquire access easement on abandoned rail corridor behind Western Tool, Kreider, and McGregor Properties
- Acquire access easement along the west perimeter of the Cox Property to Leffel Lane
- Provide crossing at Leffel Lane
- Acquire access easement along the west perimeter of the Houston Property
- Acquire access easement on abandoned rail corridor behind Crace and Donahue Properties
- Use abandoned rail corridor under I-70 to connect to existing trail south to Beatty Station

— Existing Trail
— Proposed Trail

Little Miami Scenic Trail



National Trail Parks and Recreation District
Facilities Master Plan
Clark County, Ohio

